

# REACH STACKER

 **TOYOTA**

**INDUSTRIAL EQUIPMENT**

**REACH NEW HEIGHTS**

**UP TO 99000 LBS. (50 TON) CAPACITY**

**SPECIFICATIONS**



THD9900-R60-R68-R73-R77-R85-R90

CLASS  
**5**

INTERNAL COMBUSTION ENGINE PNEUMATIC TIRE

[ToyotaForklift.com](http://ToyotaForklift.com)

## REACH STACKER

CAPACITY  
**UP TO 99000 LBS.**

WHEELBASE  
**236 IN.**

LOAD CENTER  
**78 IN.**

### INDUSTRIES



Intermodal/Port



Shipping Containers

## STANDARD FEATURES

### SAFETY

- Electrical horn
- Asbestos-free components
- Neutral safety switch
- Integrated overhead guard
- Operator Restraint System (ORS) seat
- Operator Presence Sensing System (OPSS)

### PERFORMANCE

- CUMMINS® 10.8 liter, 6-cylinder Tier 3 diesel engine
  - Common rail electronic fuel injection system
  - Turbocharged & intercooled
- Pivoting attachment with 4 ISO twistlocks
  - Extendable/retractable to 20' & 40' foot pick points
  - Automatic locking pendular floating twistlocks for handling 20' to 53' ISO containers
  - Large LED twistlock engagement indicator lights
  - Interlock safety system to ensure proper locking
  - 31.5" of side shift each way
  - Mechanical pile slope (+/- 5.0°)
- High-load composite side thrust bearings
- Boom-mounted twistlock indicator light
- Warning lights
  - battery charge
  - low engine oil pressure
  - low fuel level
  - water in fuel
  - high engine water temperature
  - clogging air filter
  - high transmission oil temperature
  - park & service brake
  - hydraulic filter
  - transmission filter
- Dana model 36000 transmission with 4 forward & 4 reverse speeds
- 4-spool main control valve (lift, tilt, extend, rotate)
- Charge air cooler with integral side by side radiator & transmission coolers
- Independent brake & brake/declutch pedals
- 2-stage high-strength steel telescoping boom
- Load-sensing, hydrostatic-powered steering
- Upswept exhaust
- Integrated multifunction display – includes
  - Hour meter display
  - Fuel gauge
  - Low fuel warning light
  - Engine oil pressure gauge
  - Battery charge warning light
  - Water temperature gauge
  - Transmission temperature gauge
  - Transmission, air & hydraulic filter indicator
  - Parking brake indicator
  - Oil pressure indicator
  - Service indicator
  - Engine water temperature indicator
  - Tachometer
  - Speedometer
  - Overload warning system

### DURABILITY

- Force-cooled wet disc brakes
- Planetary drive axle rated for durability in high-capacity, off-road applications
- AxleTech® planetary drive axle rated for durability in high-capacity, off-road applications
- Heavy-duty, welded steer axle
- Rigidly constructed welded frame
- Engine protection system
- High-capacity cooling system
- Open core radiator with fan shroud motor & alternator
- Two industrial 8D 12V batteries
- Two-stage heavy-duty air cleaner
- 12-Volt electrical system with 12V starter motor & alternator
- "Brake Saver" system prevents travel when parking brake is applied

### ERGONOMICS/CABIN

- LED front headlights (2)
- LED rear worklights (2)
- LED spreader lights (4)
- LED forward-facing fender-mounted worklights (2)
- LED rear-facing counterweight-mounted worklights (2)
- Stairway lighting
- Strobe light
- Forward & reverse travel alarms
- Single multifunction joystick control handle
- Key off headlights
- Sideview mirrors (right & left sides)
- Front indicator lights (2)
- Rear combination lights (2)
- Dashless cab design for improved visibility
- Front & rear windshield washer/wiper
- Top-mounted windshield wiper
- Cabin doors with sliding windows
- Individually controlled front/rear wipers
- LED twistlock indicator lights inside cab
- Tilt steering column
- Left-hand directional shift lever
- Adjustable air-ride seat with retractable seatbelts and adjustable armrests
- Lockable doors with greaseable hinges
- Cab heater & defroster
- Tinted glass to minimize glare
- Four turn lock-to-lock steering wheel
- Emergency E-Stop in operator compartment
- Dome light
- Hydraulically powered traversing cab
- Rear window escape hatch

### SERVICEABILITY

- Electronic engine diagnostics with fault code history
- Easy-access filters
- Hydraulic multi-gauge
- Externally serviceable brakes
- Bolt-on tanks, counterweights, cab super-structure & stairways (removable)
- External attachment spreader cylinders
- Powertrain access panels with quick-release latches

## OPTIONAL EQUIPMENT

### POWERTRAIN

- Tier 3 diesel engine
- Tier 4i (interim) diesel engine
- Precleaner
- Fitch fuel catalyst

### LOAD HANDLING

- Mechanical pile slope
- Hydraulic pile slope
- 4-point top pick ISO – twistlock
- WTP/pin module
- Trailer leg module (requires 275" wheelbase)
- Rear container guides
- Spreader beam slave attachments
- Twistlock snapshot camera system
- Container landing damage prevention system

### COLD START AID

- Oil pan heater
- Engine block heater
- Hydraulic tank heater
- Fuel heater (diesel)
- Battery pad warmer
- Coolant preheater

### CAB/CONTROLS

- Open cab (less doors, glass, wipers, heat)
- AM/FM/CD with 2 speakers
- Auxiliary 12V power supply (pass through studs)
- Air-conditioning
- Top sunshade
- Single joystick control
- Orange seatbelt
- Rearview mirror (center mount)
- Auxiliary heater/front defrost
- 3-point seatbelt
- Floor-mounted computer stand

### CHASSIS

- Counterweight towpin (recessed)

### INDICATORS & MISC.

- Forward camera system visibility aid
- Rear camera system visibility aid
- Dual camera system visibility aid
- Onboard load weighing system
- Onboard load weighing system (with tape printer)
- Fire extinguisher (5 lb. cab mount)
- Fire extinguisher (20 lb. chassis mount)
- Fire suppression system - Twin agent auto/manual
- Rear object detection radar
- 4-corner object detection radar
- Shock sensor warning system (w/logging)
- Tire pressure monitoring system
- 2nd position keyswitch twistlock override
- Ground-level E-Stop stations (1 each side)
- Ground-level monitoring kit
- French Canadian language

### ELECTRICAL

- Jumpstart receptacle
- Lockable battery isolator

### LIGHTS/ALARMS

- Extra strobe (magnetic)
- Forward travel alarm
- HID worklight upgrade (fender & CW)

### SERVICE/MAINTENANCE

- Central lubrication system
- Auto-lubrication system (chassis)
- Auto-lubrication system (spreader)
- Engine oil purification system
- Onboard battery trickle charger
- Onboard stand-alone generator

### PAINT OPTIONS (REQUIRES PAINT CODE & MAP)

- Custom color (single or dual)
- Chevron striping on counterweight
- Intermodal tire striping

### WHEELS & TIRES

- Pneumatic
- Foam-filled pneumatic tires
- Solid pneumatic tires (lugged)
- Solid pneumatic tires (smooth)
- Extra tire/rim

TRUCK SPECIFICATIONS

MODEL NUMBERS

GENERAL DATA			THD9900-R60	THD9900-R68	THD9900-R73	
Load Capacity (First Row) <sup>1</sup>	lb (kg)		99000 (44900)	99000 (44900)	99000 (44900)	
Load Capacity (Second Row)	lb (kg)		60000 (27200)	68000 (30850)	72600 (32900)	
Load Capacity (Third Row)	lb (kg)		30000 (13600)	34000 (15420)	38500 (17460)	
Load Center (Row 1 / Row 2 / Row 3) (P)	in (mm)		78 (1981) / 156 (3962) / 258 (6553)	78 (1981) / 156 (3962) / 258 (6553)	78 (1981) / 156 (3962) / 258 (6553)	
Power Type			Diesel	Diesel	Diesel	
Operator Position			Seated Rider	Seated Rider	Seated Rider	
Tire Type	Front / Rear		Pneumatic	Pneumatic	Pneumatic	
Wheels (x = driven)	Front / Rear		4x / 2	4x / 2	4x / 2	
EXTERIOR DIMENSIONS			THD9900-R60	THD9900-R68	THD9900-R73	
Boom Height (at maximum lift) (N)	in (mm)		736 (18694)	736 (18694)	736 (18694)	
Boom Height (lowered) (A)	in (mm)		181 (4597)	181 (4597)	181 (4597)	
Boom Angle (minimum / maximum)	deg		0 / 58.5	0 / 58.5	0 / 58.5	
Lift Height (under twistlocks) (D)	in (mm)		606 (15392)	606 (15392)	606 (15392)	
Lowered Height (under twistlocks) (B)	in (mm)		40 (1016)	40 (1016)	40 (1016)	
Overall Length (with attachment) (C)	in (mm)		473 (12014)	473 (12014)	473 (12014)	
Overall Length (without boom) (D)	in (mm)		314 (7976)	314 (7976)	314 (7976)	
Spreader Width (20' / 40') (E)	in (mm)		273.5 (6033) / 479 (12167)	273.5 (6033) / 479 (12167)	273.5 (6033) / 479 (12167)	
Pile Slope (mechanical / hydraulic) (+/-)	deg		5 / 4.5	5 / 4.5	5 / 4.5	
Spreader Rotation (+/-)	deg		195 / 105	195 / 105	195 / 105	
Sideshift (each way / total)	in (mm)		31.5 (800) / 63 (1600)	31.5 (800) / 63 (1600)	31.5 (800) / 63 (1600)	
Overall Width (over drive tires) (F)	in (mm)		165 (4191)	165 (4191)	165 (4191)	
Distance - Centerline of Front Axle to Face of Tires/Stabilizers (G)	in (mm)		32.25 (819)	32.25 (819)	32.25 (819)	
Turning Radius (Outside) (H)	in (mm)		343 (8712)	343 (8712)	343 (8712)	
Basic Right-Angle Stacking Aisle Width (w/10% Additional Clearance)	in (mm)		480 (12192) / 565 (14351)	480 (12192) / 565 (14351)	480 (12192) / 565 (14351)	
PERFORMANCE DATA			THD9900-R60	THD9900-R68	THD9900-R73	
Speeds	Maximum Travel (forward / reverse)	Full Load	mph (km/h)	19.3 (31.1)	19.3 (31.1)	19.3 (31.1)
		No Load	mph (km/h)	19.3 (31.1)	19.3 (31.1)	19.3 (31.1)
	Lifting	Full Load	fpm (mm/sec)	60 (304.8)	60 (304.8)	60 (304.8)
		No Load	fpm (mm/sec)	75 (381)	75 (381)	75 (381)
	Lowering	Full Load	fpm (mm/sec)	60 (304.8)	60 (304.8)	60 (304.8)
		No Load	fpm (mm/sec)	95 (482.6)	95 (482.6)	95 (482.6)
Drawbar Pull	Maximum	Full Load	lb (kg)	45096 (20455)	44903 (20368)	44803 (20322)
		No Load	lb (kg)	47076 (21353)	46883 (21266)	46783 (21221)
Gradeability	1 mph (1.5km/h) <sup>1</sup>	Full Load	%	17.6	16.9	16.6
		No Load	%	28.8	27.2	26.4
	Maximum <sup>1</sup>	Full Load	%	18.2	17.5	17.2
		No Load	%	29.4	27.8	27
TRUCK WEIGHTS			THD9900-R60	THD9900-R68	THD9900-R73	
Total Weight	lb (kg)		173166 (78547)	182800 (82917)	187837 (85201)	
Weight Distribution	Full Load (front / rear)	lb (kg)	232812 (105602) / 39353 (17850)	233170 (105767) / 48630 (22060)	232930 (105655) / 53907 (24452)	
	No Load (front / rear)	lb (kg)	87669 (39766) / 85497 (38781)	88030 (39930) / 94770 (42987)	87786 (39819) / 100051 (45382)	
TIRES			THD9900-R60	THD9900-R68	THD9900-R73	
Tires	Number (front / rear)		4 / 2	4 / 2	4 / 2	
	Size (front / rear)		18.00-25 40PR / 18.00-25 40PR	18.00-25 40PR / 18.00-25 40PR	18.00-25 40PR / 18.00-25 40PR	
Wheelbase (I)	in (mm)		236 (5994)	236 (5994)	236 (5994)	
Tread Width (front) (J)	in (mm)		120 (3048)	120 (3048)	120 (3048)	
Tread Width (rear) (K)			105 (2667)	105 (2667)	105 (2667)	
Underclearance (full load)	Minimum with Load (L)	in (mm)	7.5 (190)	7.5 (190)	7.5 (190)	
	Center of Wheelbase (M)	in (mm)	16 (406)	16 (406)	16 (406)	
Brake	Service (foot) / Parking		Wet disc / Caliper	Wet disc / Caliper	Wet disc / Caliper	
POWER SYSTEM			THD9900-R60	THD9900-R68	THD9900-R73	
Battery (5-hour rating)	V / Ah		12 / 1300	12 / 1300	12 / 1300	
Internal Combustion Engine	Make / Model		CUMMINS 10.8L QSM11	CUMMINS 10.8L QSM11	CUMMINS 10.8L QSM11	
	Rated Horsepower @ rpm	SAE HP	330 @ 2100	330 @ 2100	330 @ 2100	
		(kW)	(246 @ 2100)	(246 @ 2100)	(246 @ 2100)	
	Rated Torque @ rpm	SAE ft-lb	1235 @ 1400	1235 @ 1400	1235 @ 1400	
		(N-m)	(1674 @ 1400)	(1674 @ 1400)	(1674 @ 1400)	
	Number of Cylinders		6	6	6	
Piston Displacement	cu in (cc)	660 (10815)	660 (10815)	660 (10815)		
Fuel Tank Capacity	US gal (liter)	155 (587)	155 (587)	155 (587)		
Transmission	Type		POWERSHIFT - AUTOSHIFT	POWERSHIFT - AUTOSHIFT	POWERSHIFT - AUTOSHIFT	
	Speeds (forward / reverse)		4 / 4	4 / 4	4 / 4	
Auxiliary Hydraulic Function Specifications (for attachments)	Max. Operating Pressure	psi (kg/cm2)	2400 (168.7)	2400 (168.7)	2400 (168.7)	
	Max. Flow Rate	gpm (lpm)	25 (94.6)	25 (94.6)	25 (94.6)	

<sup>1</sup> Rated capacity is for stacking up to 4 high in the first row. Please see the capacity rating diagrams on page 7 for more information.

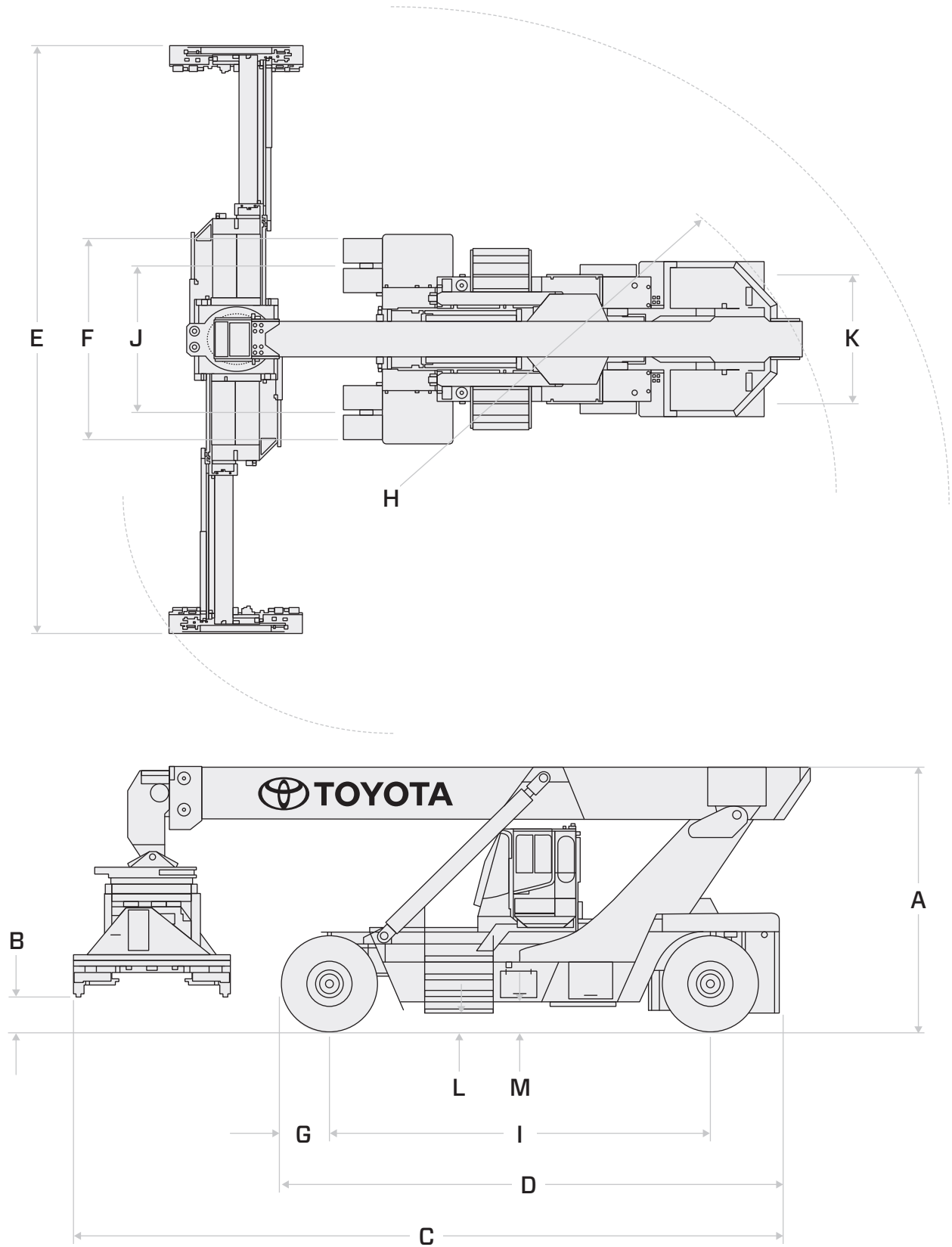
# TRUCK SPECIFICATIONS

## MODEL NUMBERS

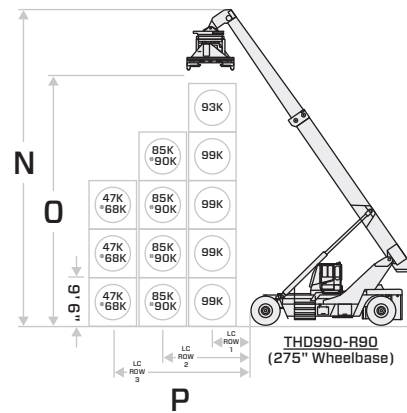
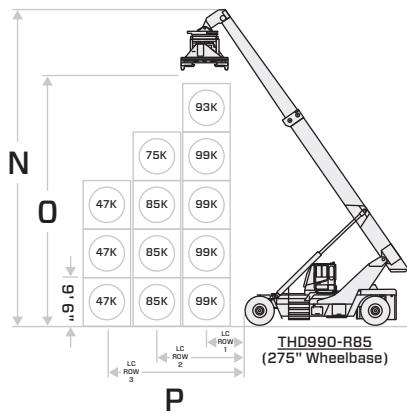
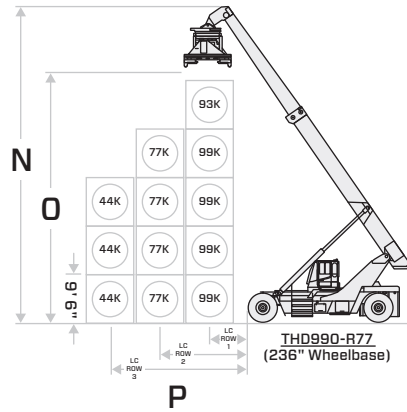
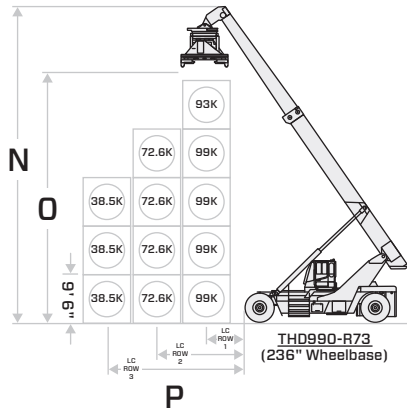
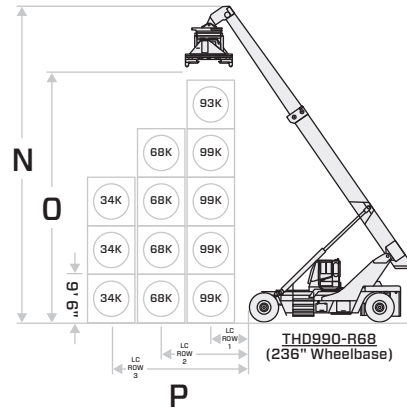
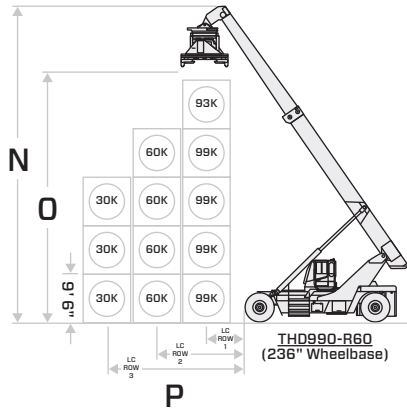
GENERAL DATA				THD9900-R77	THD9900-R85	THD9900-R90
Load Capacity (First Row <sup>1</sup> )	lb (kg)		99000 (44900)	99000 (44900)	99000 (44900)	
Load Capacity (Second Row)	lb (kg)		77000 (34900)	85000 (38600)	90000 (40000)	
Load Capacity (Third Row)	lb (kg)		44000 (20000)	47000 (21300)	68000 (30800)	
Load Center (Row 1 / Row 2 / Row 3) (P)	in (mm)		78 (1981) / 156 (3962) / 258 (6553)	78 (1981) / 156 (3962) / 258 (6553)	78 (1981) / 156 (3962) / 258 (6553)	
Power Type			Diesel	Diesel	Diesel	
Operator Position			Seated Rider	Seated Rider	Seated Rider	
Tire Type	Front / Rear		Pneumatic	Pneumatic	Pneumatic	
Wheels (x = driven)	Front / Rear		4x / 2	4x / 2	4x / 2	
EXTERIOR DIMENSIONS				THD9900-R77	THD9900-R85	THD9900-R90
Boom Height (at maximum lift) (N)	in (mm)		736 (18694)	738 (18745)	738 (18745)	
Boom Height (lowered) (A)	in (mm)		181 (4597)	183 (4648)	183 (4648)	
Boom Angle (minimum / maximum)	deg		0 / 58.5	0 / 58.5	0 / 58.5	
Lift Height (under twistlocks) (D)	in (mm)		606 (15392)	608 (15443)	608 (15443)	
Lowered Height (under twistlocks) (B)	in (mm)		40 (1016)	42 (1067)	42 (1067)	
Overall Length (with attachment) (C)	in (mm)		473 (12014)	512 (13005)	512 (13005)	
Overall Length (without boom) (D)	in (mm)		314 (7976)	356 (9042)	361 (9169)	
Spreader Width (20' / 40') (E)	in (mm)		273.5 (6033) / 479 (12167)	273.5 (6033) / 479 (12167)	273.5 (6033) / 479 (12167)	
Pile Slope (mechanical / hydraulic) (+/-)	deg		5 / 4.5	5 / 4.5	5 / 4.5	
Spreader Rotation (+/-)	deg		195 / 105	195 / 105	195 / 105	
Sideshift (each way / total)	in (mm)		31.5 (800) / 63 (1600)	31.5 (800) / 63 (1600)	31.5 (800) / 63 (1600)	
Overall Width (over drive tires) (F)	in (mm)		165 (4191)	172 (4369)	172 (4369)	
Distance - Centerline of Front Axle to Face of Tires/Stabilizers (G)	in (mm)		32.25 (819)	35 (889)	35 (889)	
Turning Radius (Outside) (H)	in (mm)		343 (8712)	381 (9677)	381 (9677)	
Basic Right-Angle Stacking Aisle Width (w/10% Additional Clearance)	in (mm)		480 (12192) / 565 (14351)	508 (12903) / 586 (14884)	508 (12903) / 586 (14884)	
PERFORMANCE DATA				THD9900-R77	THD9900-R85	THD9900-R90
Speeds	Maximum Travel (forward / reverse)	Full Load	mph (km/h)	19.3 (31.1)	20.1 (32.3)	20.1 (32.3)
		No Load	mph (km/h)	19.3 (31.1)	20.1 (32.3)	20.1 (32.3)
	Lifting	Full Load	fpm (mm/sec)	60 (304.8)	60 (304.8)	60 (304.8)
		No Load	fpm (mm/sec)	75 (381)	75 (381)	75 (381)
	Lowering	Full Load	fpm (mm/sec)	60 (304.8)	60 (304.8)	60 (304.8)
		No Load	fpm (mm/sec)	95 (482.6)	95 (482.6)	95 (482.6)
Drawbar Pull	Maximum	Full Load	lb (kg)	44702 (20277)	42622 (19333)	42550 (19300)
		No Load	lb (kg)	46682 (21175)	44602 (20231)	44530 (20199)
Gradeability	1 mph (1.5km/h) <sup>1</sup>	Full Load	%	16.3	15.2	15
		No Load	%	25.7	23.8	23.4
	Maximum <sup>1</sup>	Full Load	%	16.9	15.8	15.6
		No Load	%	26.2	24.4	23.9
TRUCK WEIGHTS				THD9900-R77	THD9900-R85	THD9900-R90
Total Weight	lb (kg)		192855 (87478)	198663 (90112)	202277 (91751)	
Weight Distribution	Full Load (front / rear)	lb (kg)	233172 (105765) / 48620 (22054)	235648 (106888) / 62015 (28130)	239605 (108683) / 61672 (27974)	
	No Load (front / rear)	lb (kg)	87546 (39710) / 105309 (47767)	97048 (44020) / 101615 (46092)	101005 (45815) / 101272 (45936)	
TIRES				THD9900-R77	THD9900-R85	THD9900-R90
Tires	Number (front / rear)		4 / 2	4 / 2	4 / 2	
	Size (front / rear)		18.00-25 40PR / 18.00-25 40PR	21.00-25 40PR / 18.00-25 40PR	21.00-25 40PR / 18.00-25 40PR	
Wheelbase (I)	in (mm)		236 (5994)	275 (6985)	275 (6985)	
Tread Width (front) (J)	in (mm)		120 (3048)	120 (3048)	120 (3048)	
Tread Width (rear) (K)	in (mm)		105 (2667)	105 (2667)	105 (2667)	
Underclearance (full load)	Minimum with Load (L)	in (mm)	7.5 (190)	9.5 (241)	9.5 (241)	
	Center of Wheelbase (M)	in (mm)	16 (406)	18 (457)	18 (457)	
Brake	Service (foot) / Parking		Wet disc / Caliper	Wet disc / Caliper	Wet disc / Caliper	
POWER SYSTEM				THD9900-R77	THD9900-R85	THD9900-R90
Battery (5-hour rating)	V / Ah		12 / 1300	12 / 1300	12 / 1300	
Internal Combustion Engine	Make / Model		CUMMINS 10.8L QSM11	CUMMINS 10.8L QSM11	CUMMINS 10.8L QSM11	
	Rated Horsepower @ rpm	SAE HP	330 @ 2100	330 @ 2100	330 @ 2100	
		(kW)	(246 @ 2100)	(246 @ 2100)	(246 @ 2100)	
	Rated Torque @ rpm	SAE ft-lb	1235 @ 1400	1235 @ 1400	1235 @ 1400	
		(N-m)	(1674 @ 1400)	(1674 @ 1400)	(1674 @ 1400)	
	Number of Cylinders		6	6	6	
Piston Displacement	cu in (cc)	660 (10815)	660 (10815)	660 (10815)		
Fuel Tank Capacity	US gal (liter)	155 (587)	155 (587)	155 (587)		
Transmission	Type		POWERSHIFT - AUTOSHIFT	POWERSHIFT - AUTOSHIFT	POWERSHIFT - AUTOSHIFT	
	Speeds (forward / reverse)		4 / 4	4 / 4	4 / 4	
Auxiliary Hydraulic Function Specifications (for attachments)	Max. Operating Pressure	psi (kg/cm <sup>2</sup> )	2400 (168.7)	2400 (168.7)	2400 (168.7)	
	Max. Flow Rate	gpm (lpm)	25 (94.6)	25 (94.6)	25 (94.6)	

<sup>1</sup> Rated capacity is for stacking up to 4 high in the first row. Please see the capacity rating diagrams on page 7 for more information.

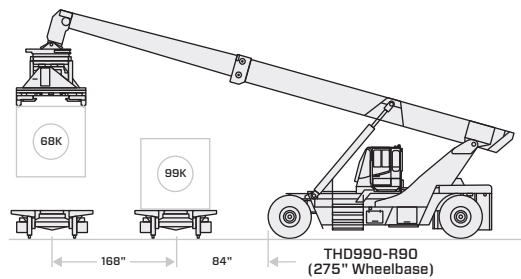
EXTERIOR DIMENSIONS



# STACKING CAPACITIES



\*Capacity to second rail with stabilizers down.



Some product features described herein are optional. Please consult your dealer for specifications.  
Details of specifications and equipment are based on information available at time of printing and may change without notice.



**INDUSTRIAL EQUIPMENT**

**REACH NEW HEIGHTS**

00722RCHSTKRSS

©2016 Toyota Material Handling, U.S.A., Inc.