

COMBiLiFT

LIFTING INNOVATION

C12,000E

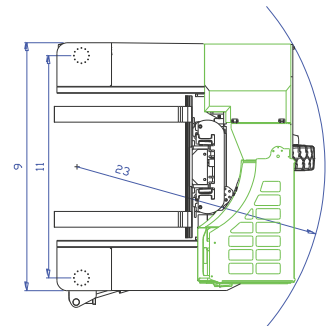
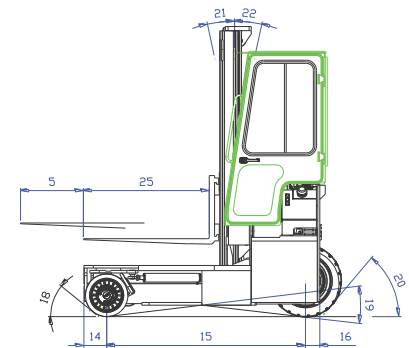
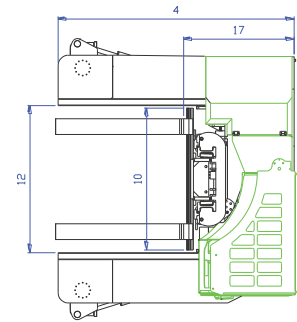
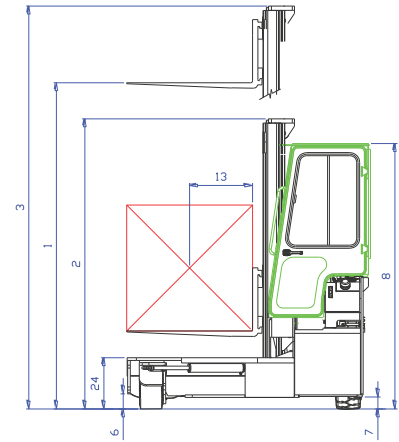
The electric multi-directional forklift designed for the safe, space saving and productive handling of long and bulky loads.



COMBi C-Series

combilift.com

REF.	DESCRIPTION	C12,000 E
1a	Max. Lift Height	159"
1b	Freelift Height	0"
2	Height Mast Closed	112"
3	Max. (Mast raised)	192"
4	Overall Length	105¼"
5	Mast Travel	57"
6	Ground Clearance Under Mast	6"
7	Ground Clearance to Center of Wheelbase	7"
8	Height Over Cab (without work lights)	99½"
9	Width	92½"
10	Outside Spread of Fork Arms	53¼"
11	Track Front	90½"
12	Frame Opening	55¼"
13	Load Center Distance	24"
14	Overhang Front	8¾"
15	Wheelbase	91½"
16	Overhang Back	5¼"
17	Length From Face of Fork	52¼"
18	Approach Angle	45°
19	Ramp Angle	17°
20	Departure Angle	45°
21	Forward Tilt	3°
22	Backward Tilt	5°
23	Minimum Outside Radius	105¾"
24	Platform Height	19¼"
25	Platform Length	53¼"
A	Capacity	12,000 lbs
B	Unladen Weight	17,200 lbs
C	Maximum Ground Speed	6 mph
D	Gradeability	10%
E	Battery Capacity	80 V / 700 Ah
F	Fork Section	8" x 2" x 53¼"
G	16 x 7 – 10.5 Front Tyre (Solid Rubber)	OD 16" / Width 8¾"
H	27 x 10-12 Rear Tire	OD 26¾" / Width 10"
I	Standard Color	Green & Gray
J	AC Electric Traction Motor x 3	80 V / 7 HP
K	AC Electric Pump Motor	80 V / 25 HP



International Patent Application No. PCT/EP2014/053066; UK Patent Application No. GB 1302811.3

Features Include:

- Rubber Mounted Cabin
- AC Motor Technology
- Multi-Directional Operation
- Load Sensing Steering
- 4 Way Lever Positioning of Wheels
- 3 Wheel Drive

Distributed by:

303 Concord Street
Greensboro
North Carolina 27406
Toll free: 1-877 COMBI 56
Tel: 336-378-8884
info@combilift.com

Combilift has a policy of continuous product development and reserves the right to alter specifications without prior notice. Specifications and/or dimensions may vary from those illustrated in some countries.

C12,000E

combilift.com