

COMBiLiFT

LIFTING INNOVATION

COMBi-GTE

The multi-directional forklift designed for the safe, space saving and productive handling of long and bulky loads.



COMBi - GTE

combilift.com

REF.	DESCRIPTION	6,000 GTE	11,000 GTE
1a	Max. Lift Height	236"	
1b	Free Lift Height	98"	
2	Height Mast Closed	157"	
3	Max. Mast Raised	279"	
4	Overall Length	50"	54"
5	Mast travel	27½"	
6	Ground Clearance Under Mast	5"	
7	Ground Clearance to Center of Wheelbase	5"	
8	Height Over Cab (without work lights)	105"	
9	Width	116¼"	
10	Outside Spread of Fork Arms	53"	
11	Wheelbase	90½"	
12	Frame Opening	55"	
13	Load Center Distance	12"	
14	Overhang Front	6"	
15	Track	38½"	42½"
16	Overhang Back	5½"	
17	Length from Face of Fork	26"	30"
18	Forward Tilt	3°	
19	Backward Tilt	4½°	
20	Platform Height (with front lowered)	16½"	
21	Platform Length	24"	
22	Overall Width	135"	
A	Capacity	6,000 lbs	11,000 lbs
B	Unladen Weight	19,000 lbs	20,500 lbs
C	Maximum Ground Speed	7 mph	
D	Gradeability	10%	
E	Battery Capacity	72 V 560 Ah	
G	Fork Section	2" x 6" x 24"	
H	350 / 150 - 280 Front Tire	OD 13¾" / Width 6"	
I	16 x 7 - 12 Rear Tire	OD 16" / Width 7"	
J	Standard Color	Yellow & Gray	

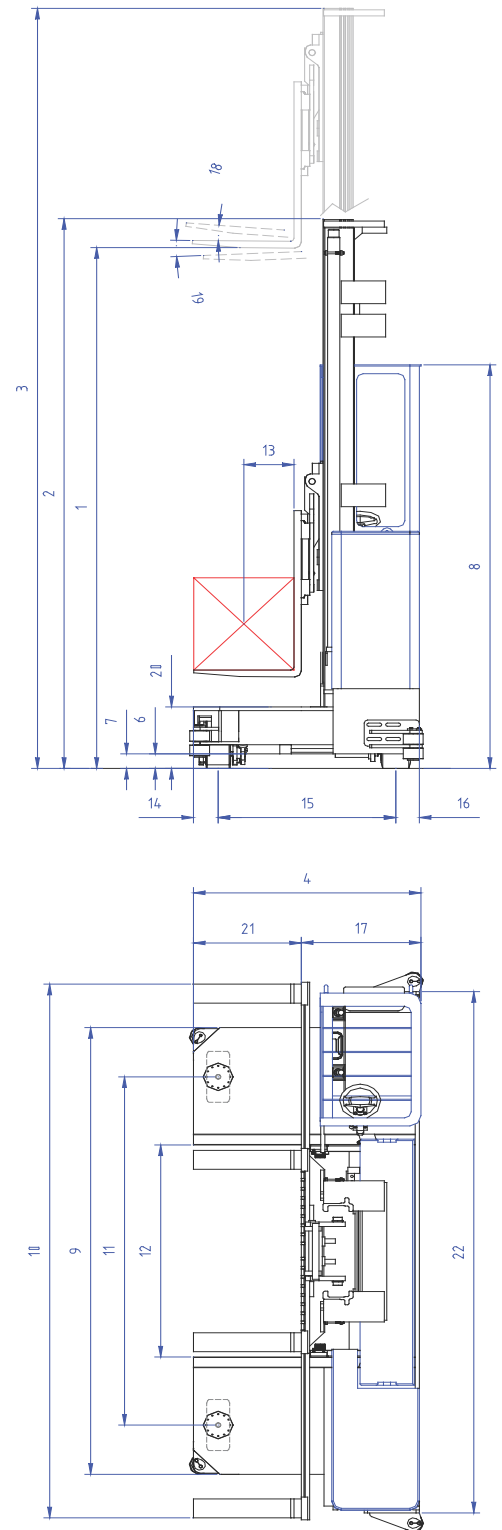
Features Include:

- Low Step-In Cabin
- 2 Wheel AC Electric Drive
- Load Sensing Steering
- 4 Wheel Steering
- Tilting Chassis +/- ½" At Front
- Curved Leading Edges

Optional:

- Wire Guidance
- Fold-up Forks

Distributed by:



303 Concord Street,
Greensboro,
North Carolina 27406
Toll free: 1-877 COMBI 56
Tel: 336-378-8884
info@combilift.com

Combilift has a policy of continuous product development and reserves the right to alter specifications without prior notice. Specifications and/or dimensions may vary from those illustrated in some countries.