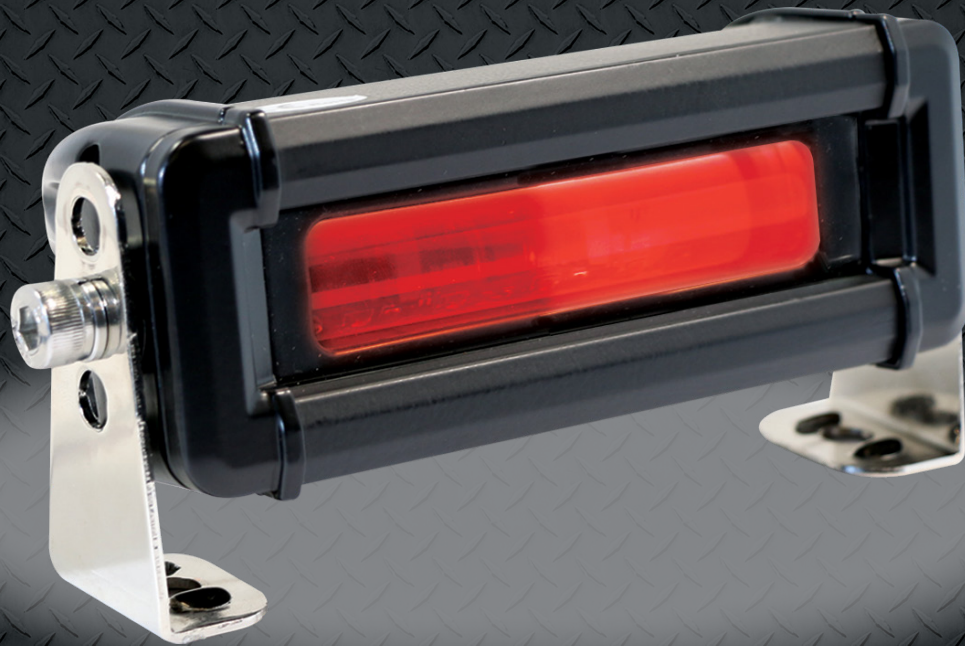


RED-ZONE

LED PEDESTRIAN WARNING LIGHT



NEXT PAGE

RED-ZONE

LED PEDESTRIAN WARNING LIGHT



40% of all forklift accidents involve a pedestrian. Ensure pedestrians stay a safe distance away from the lift truck with the Red-Zone LED Warning Light. The Red-Zone emits a red beam on the floor to keep pedestrians away preventing foot injury or collisions from rear end swing.

The Red-Zone combined with the Blue Light offers a complete pedestrian warning system for your warehouse.

Specifications:

- 100,000hrs lifespan
- 2 Year Warranty
- CE Rated
- Easy Installation
- Includes Mounting Hardware
- Operating Voltage: 9 - 64V
- PC Lens Material
- Size: 6" x 2.25" x 2.75"
- Temperature Rating: -40 - 250F
- Weight: 0.710kg
- 304 stainless steel bracket
- Aluminum alloy housing material
- LED Type: Osram 3W
- LED Qty: 6pcs
- Waterproof: IP67
- Rated Power: 18W
- Current (13.5V): 1.39A

REDZONE-C: \$150.00



RED-ZONE

LED PEDESTRIAN WARNING LIGHT



[Click to open the
Red-Zone Warning Light Video.](#)

A photograph of a warehouse aisle. In the center, a black forklift is moving away from the camera. On the floor in the foreground, there is a bright blue circular light. Two red rectangular lights are projected onto the floor on either side of the forklift's path. The aisle is lined with blue metal shelving units filled with cardboard boxes. The background shows more of the warehouse structure.

***The Red-Zone
Pedestrian Warning Light***