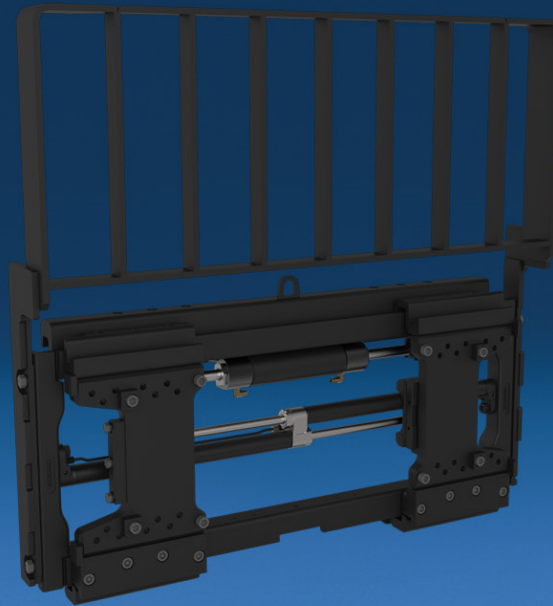


Rugged Fork Positioning for Demanding Applications and Harsh Environments



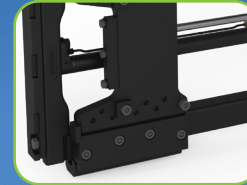
Secure bolt-on full-width load backrest



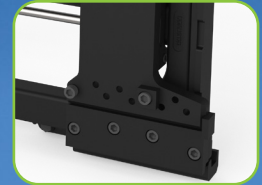
Long lasting replaceable bearing segments ensuring smooth travel and no wear on the fork hooks



See over the top of the frame with excellent operator visibility



Fork carriers accommodate various fork widths and fork mounting positions



Unique design and construction allows fork carriers to extend beyond the frame width

APPLICATIONS

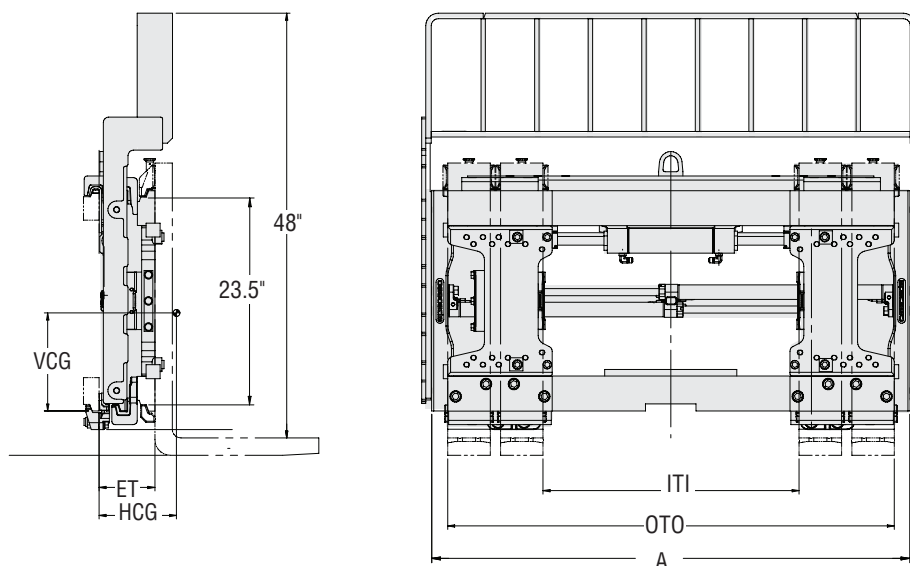
Recommended for rigorous applications including automotive, steel, lumber and various outdoor uses. Suitable for both standard, long fork and specialty forks such as telescopic fork applications, the K-Series "Carrier" Class 4 Fork Positioners have a capacity range from - 12,00-15,000 lbs. K-Series "Carrier" Class 4 Fork Positioners are designed to be used in the most rugged environments, tackling your toughest material handling challenges. The fork carriers are easily adjusted to accommodate a variety of fork widths.

FEATURES

- Multiple hose termination options for quick and easy installation.
- Fork carriers with easy-to-service, durable, replaceable bearing segments ensure smooth travel and no wear on the fork hooks.
- Easy-to-install full-width load backrest.
- Unique design and construction allow fork carriers to extend beyond the frame width.
- Adaptable fork carriers accommodate various fork widths and can be adjusted so the forks are full out or forks full in.
- No-Weld installation.
- Zinc plated, corrosion resistant components.

OPTIONS

- Non-sideshifting or custom sideshift stroke.
- Anti-drift hydraulics and independent fork control.
- Radio Frequency (RF), Solenoid or Sequence Valve hydraulic controls.
- Quick-disconnect lower hooks.
- Custom load backrest heights and custom fork ranges.
- Several termination options including non-standard RH/LH arrangements for quick and easy installation.
- Bronze upper sideshift bearings.
- Bronze lower sideshift hooks
- Cylinder and/or pallet guards.
- Bolt-on, Weld-on or Telescopic Forks.

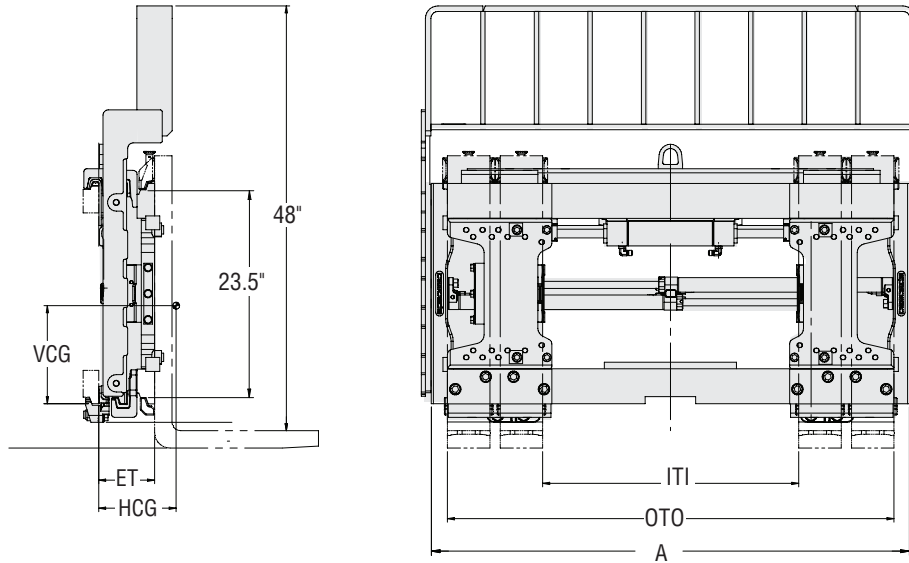


Sideshifting

Catalog Order No.	Capacity@ 24" (600 mm) Load Center		Frame Width A	Forks Full Out on Carrier (Out to Out)	Forks Full In on Carrier (In to In)	Mtg. Class	Min. Truck Carriage Width	Weight		Effective Thickness ET	Horizontal Ctr. of Gravity HCG	Vertical Ctr. of Gravity VCG	Total Sideshift
	lbs	kg						lbs	kg				
	With Backrest 48" High												
120K-FPS-4A-6100	12,000	5,500	44.3"	23.6" - 48.2" ①	2.0" - 26.6" ②	IV	41.9"	801	363	6.3"	3.7"	12.7"	8"
120K-FPS-4A-6101	12,000	5,500	46.3"	23.6" - 50.2" ①	2.0" - 28.6" ②	IV	41.9"	810	367	6.3"	3.7"	12.7"	8"
120K-FPS-4A-6102	12,000	5,500	47.2"	23.6" - 51.2" ①	2.0" - 29.6" ②	IV	41.9"	823	373	6.3"	3.7"	12.8"	8"
120K-FPS-4A-6103	12,000	5,500	48.0"	23.6" - 52.0" ①	2.0" - 30.4" ②	IV	41.9"	827	375	6.3"	3.7"	12.8"	8"
120K-FPS-4A-6104	12,000	5,500	49.0"	23.6" - 53.0" ①	2.0" - 31.3" ②	IV	41.9"	832	377	6.3"	3.7"	12.8"	8"
120K-FPS-4A-6105	12,000	5,500	54.1"	23.6" - 58.1" ①	2.0" - 36.5" ②	IV	50.9"	878	398	6.3"	3.7"	12.8"	8"
120K-FPS-4A-6106	12,000	5,500	59.1"	23.6" - 63.0" ①	2.0" - 41.4" ②	IV	50.9"	920	417	6.3"	3.6"	12.9"	8"
120K-FPS-4A-6107	12,000	5,500	60.0"	23.6" - 63.9" ①	2.0" - 42.3" ②	IV	50.9"	924	419	6.3"	3.6"	12.9"	8"
120K-FPS-4A-6108	12,000	5,500	61.0"	23.6" - 65.0" ①	2.0" - 43.3" ②	IV	50.9"	928	421	6.3"	3.6"	12.9"	8"

- ① To calculate minimum in to in dimensions with forks full out on carriers: for 4.8, 4.9, 5, 5.1, 6, 7, 8, 10" wide forks subtract 9.6, 9.8, 10, 10.2, 12, 14, 16, 20" respectively from "a" dimension.
- ② To calculate maximum out to out dimensions with forks full in on carriers: for 4.8, 4.9, 5, 5.1, 6, 7, 8, 10" wide forks add 9.6, 9.8, 10, 10.2, 12, 14, 16, 20" respectively to "d" dimension.

- Suitable for 4.8, 5, 5.1, 6, 7, 8, 10" forks.
- Consult Cascade for applications beyond recommended load limits.
- In order to insure that the unit best suited for the application is selected, consult Cascade.
- Forks are not included with attachment.
- Fork installation does not require welding, drilling or tapping.
- Non-sideshifting units available see page 2-1.
- Consult Cascade for unit without load backrest.
- **DO NOT USE TO CLAMP LOADS.**

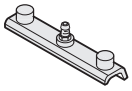


Sideshifting

Catalog Order No.	Capacity@ 24" (600 mm) Load Center		Frame Width A	Forks Full Out on Carrier (Out to Out)	Forks Full In on Carrier (In to In)	Mtg. Class	Min. Truck Carriage Width	Weight		Effective Thickness ET	Horizontal Ctr. of Gravity HCG	Vertical Ctr. of Gravity VCG	Total Sideshift
	lbs	kg		ITI-OTO	ITI-OTO			lbs	kg				
	With Backrest 48" High							opening range for 6" forks					
150K-FPS-4A-6100	15,000	7,000	46.3"	23.6" - 50.2" ①	2.0" - 28.6" ②	IV	46.1"	812	368	6.3"	3.7"	12.8"	8"
150K-FPS-4A-6101	15,000	7,000	48.0"	23.6" - 52.0" ①	2.0" - 30.4" ②	IV	46.1"	829	376	6.3"	3.7"	12.8"	8"
150K-FPS-4A-6102	15,000	7,000	49.0"	23.6" - 53.0" ①	2.0" - 31.3" ②	IV	46.1"	836	379	6.3"	3.7"	12.8"	8"
150K-FPS-4A-6103	15,000	7,000	54.1"	23.6" - 58.1" ①	2.0" - 36.5" ②	IV	48.0"	920	417	6.3"	3.5"	12.5"	8"
150K-FPS-4A-6104	15,000	7,000	60.0"	23.6" - 63.9" ①	2.0" - 42.3" ②	IV	48.0"	968	439	6.3"	3.5"	12.5"	8"
150K-FPS-4A-6105	15,000	7,000	61.0"	23.6" - 65.0" ①	2.0" - 43.3" ②	IV	48.0"	975	442	6.3"	3.5"	12.5"	8"
150K-FPS-4A-6106	15,000	7,000	65.9"	25.9" - 69.9" ③	2.0" - 46.3" ④	IV	53.6"	1,115	507	6.3"	3.2"	16.2"	12"
150K-FPS-4A-6107	15,000	7,000	71.9"	25.9" - 75.8" ③	2.0" - 52.2" ④	IV	60.0"	1,203	547	6.3"	3.1"	16.2"	12"
150K-FPS-4A-6108	15,000	7,000	74.8"	25.9" - 78.7" ③	2.0" - 55.1" ④	IV	68.0"	1,230	559	6.3"	3.1"	16.3"	12"
150K-FPS-4A-6109	15,000	7,000	78.3"	25.9" - 82.3" ③	2.0" - 58.7" ④	IV	72.0"	1,267	576	6.3"	3.0"	16.4"	12"
150K-FPS-4A-6110	15,000	7,000	86.6"	25.9" - 90.6" ③	2.0" - 66.9" ④	IV	81.0"	1,338	608	6.3"	3.0"	16.5"	12"
150K-FPS-4A-6111	15,000	7,000	93.5"	25.9" - 97.4" ③	2.0" - 73.8" ④	IV	82.0"	1,399	636	6.3"	3.0"	16.5"	12"

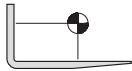
- ① To calculate minimum in to in dimensions with forks full out on carriers: for 4.8, 4.9, 5, 5.1, 6, 7, 8, 10" wide forks subtract 9.6, 9.8, 10, 10.2, 12, 14, 16, 20" respectively from "a" dimension.
- ② To calculate maximum out to out dimensions with forks full in on carriers: for 4.8, 4.9, 5, 5.1, 6, 7, 8, 10" wide forks add 9.6, 9.8, 10, 10.2, 12, 14, 16, 20" respectively to "d" dimension.
- ③ To calculate minimum in to in dimensions with forks full out on carriers: for 4.8, 4.9, 5, 5.1, 6, 7, 8, 10, 11.8" wide forks subtract 9.6, 9.8, 10, 10.2, 12, 14, 16, 20, 23.6" respectively from "a" dimension.
- ④ To calculate maximum out to out dimensions with forks full in on carriers: for 4.8, 4.9, 5, 5.1, 6, 7, 8, 10, 11.8" wide forks add 9.6, 9.8, 10, 10.2, 12, 14, 16, 20, 23.6" respectively to "d" dimension.

- Suitable for 4.8", 5", 5.1", 6", 7", 8", 10", 11.8" forks.
- Consult Cascade for applications beyond recommended load limits.
- In order to insure that the unit best suited for the application is selected, consult Cascade.
- Forks are not included with attachment.
- Fork installation does not require welding, drilling or tapping.
- Non-sideshifting units available see page 2-1.
- Consult Cascade for unit without load backrest.
- **DO NOT USE TO CLAMP LOADS.**



Bronze Bearings and Hooks

Recommended for highly abrasive and contaminated environments. Using both bronze upper and lower bearings may increase sideshift hydraulic pressure requirements.



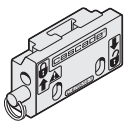
Extended Load Center Package

For applications where the load center exceeds 48" or the fork length exceeds 96". Includes Bronze Upper Bearings and Bronze Lower Hooks.



Cold Storage Package

For applications where temperatures may fluctuate from normal ambient to -40° F or where the unit will operate continuously in temperatures from 32° to -20°F. Includes Bronze Upper Bearings, Bronze Lower Bearings and Bronze Lower Hooks (if available).



Quick-Disconnect Mounting Kit

(Factory Install Only)

Quick-Disconnect Mounting Kits increase versatility by allowing the attachments and trucks to be interchangeable. After disconnecting hydraulic hose couplers, attachments can be interchanged in two minutes or less without the use of tools (Quick-Disconnect Hydraulic Couplers not included in kit).

Sequence Valve - Attachment Mounted Factory Installed

Permits fork positioning at the end of the sideshift stroke. Allows fork positioning and sideshifting with a single function auxiliary hydraulic system (sideshift left to open forks, sideshift right to close forks).

Option	Order Code
Bronze Lower Hooks (pair)	KIILBH
Bronze Upper Bearings (pair)	KIIUBB
Bronze Lower Bearings (pair)	KIILBB
Extended Load Center Package	KIIIELP
Cold Storage Package	KIICSP
Quick Disconnect Mounting Kit	KLQDIII
Sequence Valve	SV12

Solenoid Valve - Attachment Mounted Factory Installed

Allows one auxiliary valve to be used for a sideshifting unit.

Includes control knob.

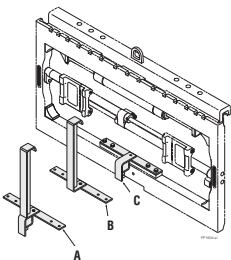
Truck Voltage	Order Code
12V	SD11
24V	SD12
36V	SD13
48V	SD14



Bolt-On Protector Kits

Optional guard to prevent pallet or cylinder damage, includes fasteners.

Option	Order Code
Cylinder/Pallet Guard (A)	KLCPG
Cylinder Guard Only (B)	KLCG
Pallet Guard Only (C)	KLPG



Radio Frequency Hydraulic Control

A cost-effective means to position forks on a K or L-Series Fork Positioner. Permits the use of a single auxiliary valve to control an additional hydraulic function. Includes two Li-Ion batteries, Li-Ion Universal Smart Charger and Low Profile Switch Kit. If a Control Knob is required in place of the Low Profile Switch Kit, list as a separate item on the order. Includes either a Low Profile Switch Kit or a Control Knob Kit.

Option	Order Code
Radio Frequency Hydraulic Control FPS	RFHC
Li-Ion Universal Smart Battery Charger	BACH
Control Knob Kit	6823292
JIC Installation Kit	6055928
ORFS Installation Kit	6055932

K-Series Carrier Load Backrests

Catalog Order No.	Model	Width (in)	Backrest Height
6961299	55K Carrier	31.0	48
6961302	55K Carrier	36.2	48
6961303	55K Carrier	37.0	48
6961304	55K Carrier	38.5	48
6961305	55K Carrier	40.2	48
6961306	55K Carrier	40.9	48
6961307	55K Carrier	42.0	48
6960937	55K Carrier	48.0	48
6961311	55K Carrier	49.0	48
6961329	55K Carrier	51.2	48
6964730	65K Carrier	37.0	48
6964693	65K Carrier	38.2	48
6964731	65K Carrier	39.4	48
6964964	65K Carrier	40.9	48
6964732	65K Carrier	42.1	48
6964736	65K Carrier	46.1	48
6964737	65K Carrier	48.0	48
6964966	65K Carrier	49.0	48
6964738	65K Carrier	51.2	48
6951769	100K Carrier	40.9	48
6953927	100K Carrier	49.0	48
6954143	100K Carrier	61.0	48
6954156	100K Carrier	68.1	48
6954159	100K Carrier	75.0	48
6970379	120/150K Carrier	44.3	48
6970415	120/150K Carrier	46.3	48
6970473	120/150K Carrier	47.2	48
6970474	120/150K Carrier	48.0	48
6970475	120/150K Carrier	49.0	48
6970476	120/150K Carrier	54.1	48
6970477	120/150K Carrier	59.1	48
6970478	120/150K Carrier	60.0	48
6970479	120/150K Carrier	61.0	48
6977519	120/150K Carrier	65.9	48
6977521	120/150K Carrier	71.9	48
6977524	120/150K Carrier	74.8	48
6977530	120/150K Carrier	78.3	48
6977550	120/150K Carrier	86.6	48
6977556	120/150K Carrier	93.5	48