

X660SJ

COMPACT CRAWLER

BOOM LIFT



KEY SPECS

Platform Height

65-ft 7-in / 20-m

Horizontal Outreach

39-ft / 11.9-m

Working Height

71-ft 7-in / 21.81-m

Platform Capacity

500-lb / 227-kg

KEY FEATURES

- Best in class 500-lb unrestricted platform capacity, with SkyGuard SkyLine™ standard.
- Environmentally friendly with standard AC powered boom functions with diesel, optional bi-energy or optional lithium-ion electrical system for emission-free operation.
- Transport with ease by a forklift or crane with forklift pockets and lifting eyes, and fits through double doorway.
- Enhance efficiency with unique "Go Home" and "Go Back to Work" functions for ease of returning to stowed or recorded work position.

ACCESSORIES

- Black Deep-Tread Tracks
- Bi-Energy Power Option - Includes Diesel Engine and Lithium-Ion Battery
- Outrigger Sliding Pads

STANDARD SPECIFICATIONS

Performance

Platform Height	65-ft 7-in / 20-m
Working Height	71-ft 7-in / 21.81-m
Max Working Horizontal Outreach	39-ft / 11.9-m
Platform Capacity	500-lb / 227-kg
Swing	360 Degrees Non-continuous
Jib (Range of Articulation)	89 Degrees (0/-89)
Travel Speed (Diesel)	1.2 mph / 2.0 km/h
Travel Speed (Lithium Ion & Bi-Energy)	1.6 mph / 2.6 km/h
Max Front Approach Angle:	19 Degrees
Max Rear Approach Angle:	19 Degrees
Max Stabilization Slope	15 Degrees
Gradeability	40%
Ground Bearing Pressure (Tracks)	9.08 psi / .63 kg/cm ²
Ground Bearing Pressure (Outriggers)	79.7 psi / 5.6 km/cm ²

Outrigger Footprint (From Outer Edge):

Total Stabilization Area	14-ft 1-in x 13-ft 4-in / 4.27-m x 4.08-m
Reduced Stabilization Area	18-ft 10-in x 7-ft 11in / 5.73-m x 2.41-m
Weight (Diesel & Bi-Energy)*	6,548-lb / 3,350-kg
Weight (Lithium Ion)*	7,275-lb / 3,300-kg

*Certain options or country standards increase weight.

Power

Diesel Engine	Diesel Kubota Z602 14.5 HP / 10.8 kW
Fuel Tank Capacity (Diesel)	7.4 gal. / 28-L

Electric-motor

Optional: 51.4V 120 Ah Lithium Ion Battery

Optional: Bi-Energy

Tracks

Standard	Non-marking Tracks
----------	--------------------

Hydraulic System

Capacity	10.6 gal / 40 L
----------	-----------------

STANDARD FEATURES

- 110V AC Receptacle in Platform 58 x 30-in
- 360 Degree Non-Continuous Swing
- 5-ft Articulating Jib
- AC Motor for Indoor Operation
- Air/Water Line to Platform
- Electronic Controls with One-Touch Outrigger Deployment
- Emergency Lowering Pump
- Flashing Amber Beacon
- Fork Lift Pockets
- Lifting Eyes
- Load Sensing System
- Non-Marking Tracks
- Powered Track Widening
- Proportional Controls
- Removable Aluminum Platform Dual Side Entry
- Removable Controller
- SkyGuard SkyLine™
- Synthetic Biodegradable Hydraulic Oil
- Telematics-Ready Harness
- Tie Down Lugs

X660SJ

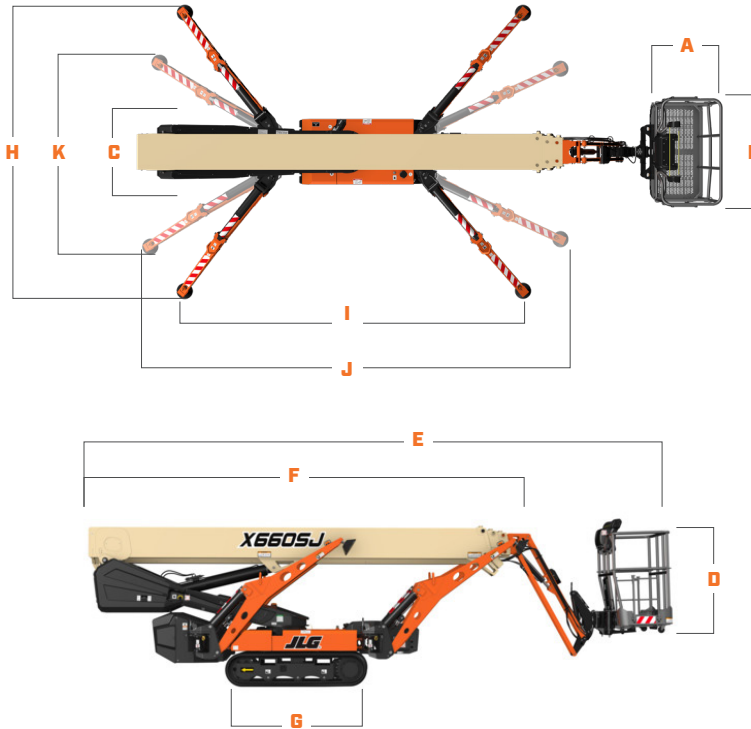
COMPACT CRAWLER

BOOM LIFT



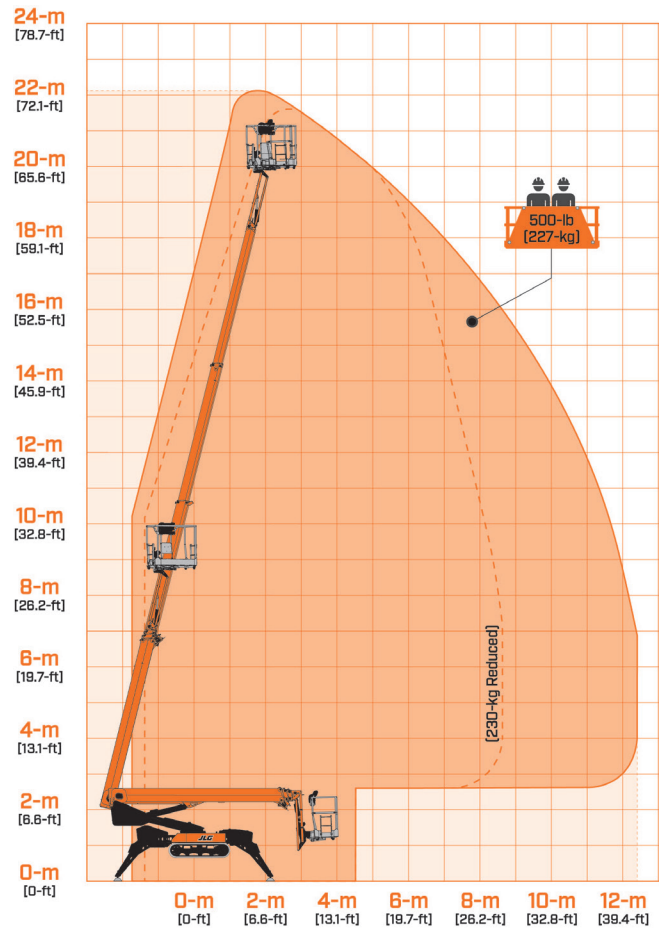
DIMENSIONS

All dimensions are approximate



- A.** Platform Width 25.5-in / .65-m
- B.** Platform Length 51.5-in / 1.31-m
- C.** Machine Width 35-in / 89-m
- D.** Machine Height 6-ft 6-in / 1.98-m
- E.** Machine Length 21-ft 11-in / 6.44-m
- F.** Machine Length (without platform) 19-ft 1-in / 5.82-m
- G.** Track Length 5-ft 7-in / 1.71-m
- H.** Outrigger Footprint - Length 14-ft 1-in / 4.27-m
- I.** Outrigger Footprint - Width 13-ft 4-in / 4.08-m
- J.** Outrigger Footprint - Narrow Length 18-ft 10-in / 5.73-m
- K.** Outrigger Footprint - Narrow Width 7-ft 11in / 2.41-m
- L.** Outrigger Pad Diameter 9-in / 23-cm

REACH DIAGRAM



We provide coverage for one (1) full year, and cover all specified-major structural components for five (5) years. Due to continuous product improvements, we reserve the right to-make specification and/or equipment changes without prior notification. This-machine-meets or exceeds applicable ANSI and CSA requirements based on-machine configuration as originally-manufactured for intended applications. Please reference the serial number plate on the-machine for additional information.



JLG INDUSTRIES, INC.
Toll-free US 877-JLG-LIFT
JLG.com

An Oshkosh Corporation Business