



## J-Series Sliding Arm Clamps



Designed for optimal strength, durability, & performance.

# EFFICIENT HANDLING

Cascade clamps deliver, whether you're handling boxes, crates, or bales, including cotton, wool, synthetic textile fibres, hay, recycled clothing, and more. They're extremely durable for the toughest conditions, versatile, and easy to service. Each Cascade Clamp is designed to do a particular job and do it well, so you can always find the right clamp for any load.



## IMPROVED DURABILITY\*

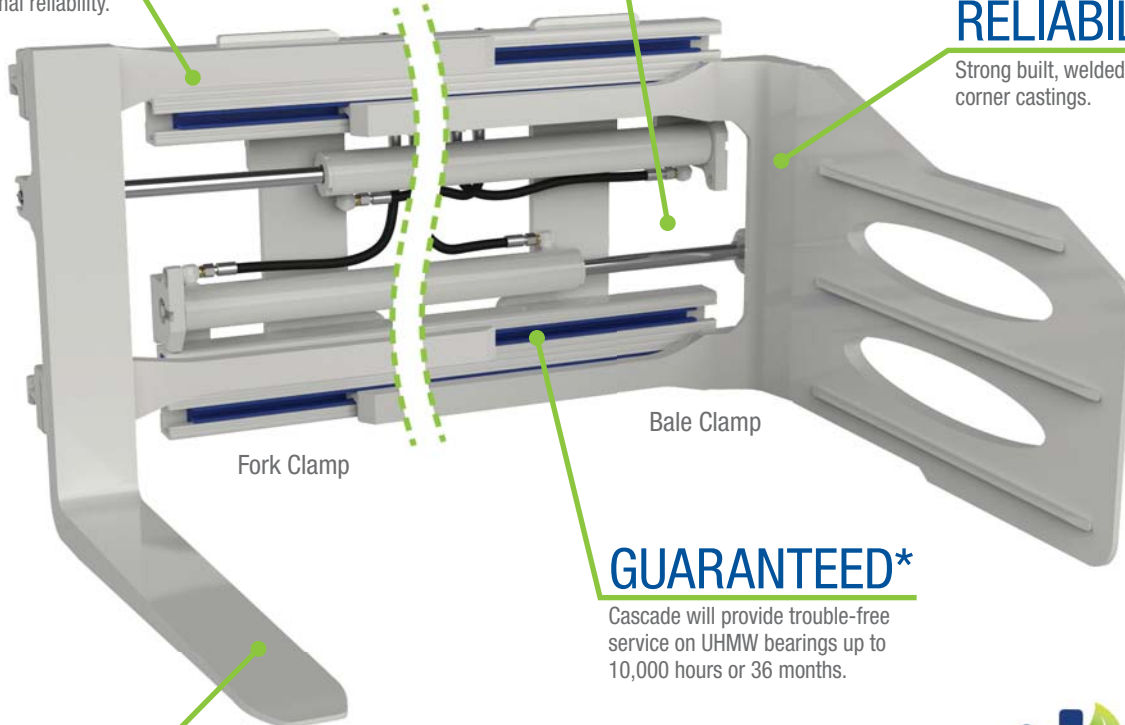
High strength steel frame for optimal reliability.

## INCREASED PRODUCTIVITY\*

Maximized visibility.

## IMPROVED RELIABILITY\*

Strong built, welded corner castings.



## GUARANTEED\*

Cascade will provide trouble-free service on UHMW bearings up to 10,000 hours or 36 months.

## VERSATILITY\*

Multiple arm and fork configurations to suit any load.

## REDUCED MAINTENANCE\*

Rugged design offers optimal durability and performance



The J-Series Clamps have an efficient hydraulic system which minimizes energy consumption and maximizes performance.

\* Common benefits for all J-Series Clamp models. Model pictured shows Fork Clamp and Bale Clamp.

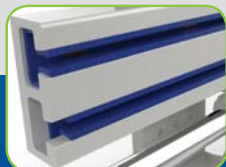
## Common Clamp Features & Benefits:

Ease of use and increased productivity



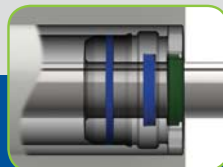
INDUSTRY-LEADING VISIBILITY THROUGH FRAME

Reduced maintenance, improved performance



RELIABLE, FULL-LENGTH BEARINGS

Improves reliability by reducing leaks



DURABLE HYDRAULIC SEAL CONFIGURATION

Improved clamp and product protection



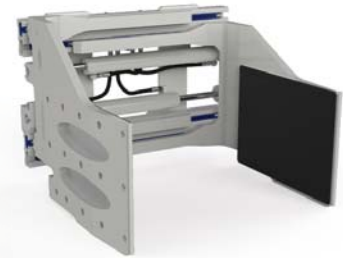
ADJUSTABLE PRESSURE RELIEFS

Assures secure and precise mounting



TRUE CENTERING KEY

# SUPERIOR PERFORMANCE



## Pulp Bale Clamps

- Integral arm casting for added strength.
- Thin arm profile enables damage-free “knifing” between tightly stacked bales.
- Smooth, round bars on arm facing to protect product while handling.

## Recycling Clamps

- Integral arm casting for added strength.
- Designed for harsh environments: Hardened steel wear components protect frame & arms when scraping on the ground and allow for better sweeping capabilities.

## Multipurpose Clamps

- Available with bolt-on arms for flexibility or welded corner casting for improved strength.
- Ribbed rubber faced contact pads for secure handling of corrugated, metal and wooden containers as well as baled product.
- Thin arm profile with hydraulic sideshift enables close stacking.

## J-Series Clamp Options

	BALE CLAMP	PULP BALE CLAMP	RECYCLING CLAMP	MULTI-PURPOSE CLAMP
Basic and Sideshifting Models	✓	✓	✓	✓
Revolving Models	✓	✓	N/A	✓
External Sideshifter Mounting	✓	✓	✓	✓
Load Backrest	✓	✓	✓	✓
High- or Low-Pressure Hydraulic Systems	✓	✓	✓	✓
Regeneration Valve	✓	✓	✓	✓
Valve Guard	✓	✓	Standard	✓
Independent Arm Control	✓	✓	✓	✓
Bumper/Cylinder Cover	✓	✓	Standard	✓
Wear Strips Under Arms and Frame	✓	✓	Standard	N/A
Arm Facing Options ( <i>round bar, serrated rib, &amp; button</i> )	✓	✓	✓	N/A
Special Arm Dimensions	✓	✓	✓	✓
Special Frame Widths and Opening Ranges	✓	✓	✓	✓
Bolt-On Arms for Flexibility	✓	N/A	N/A	✓
Weld-On Arms for Improved Strength	✓	Standard	Standard	✓

***Increase productivity, reduce down time.***

# More Clamp Solutions for Every Challenge



## **Fork Clamps & Fork Positioners**

Handle all palletized loads, including difficult loads such as wide crates, boxes and cages. The fork clamp can clamp loads between the forks or work with a variety of slip-on arms.



## **Bulk Box Handler**

Versatile attachments used to handle produce, piece parts, and other items where a box attached to a pallet requires support of multipurpose arms for rotating and dumping.



## **Bar Arm Clamp**

Designed for handling textile rolls, the round bar arms can cradle single or multiple rolls between the arms, or enter the core to handle the roll.



## **Drum Clamps**

Used wherever product is stored in drums, including the petroleum, chemical and food processing industries. Improve productivity by handling single drums or up to four drums per load.



## **Forward Drum Dumper**

Slip-on arms allow for forward rotation (dumping) of both steel and plastic drums used in petrochemical industries, food processing, and manufacturing.



## **Foam Rubber Clamps**

For handling large blocks of foam rubber or other light weight volume products like insulation materials. The high visibility tubular arms are strong but smooth to avoid product damage.



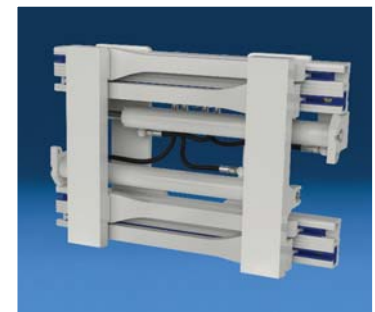
## **Turnforks**

Used in manufacturing, warehousing, processing and shipping environments that require both clamp and pallet handling or where the arm position must be changed frequently.



## **Turnloads**

Versatile clamps used for pallet transfer from expensive in-house pallets to less expensive options. Also used for product rotation in food processing and the waste recycling industry.



## **No-Arm Clamps**

Built for customization, No-Arm Clamps feature the performance of a J-Series sliding arm clamp base with bolt-on arm pads for specialized solutions.



## **Revolving Clamps**

Most Cascade clamps are available in revolving models, for clamping and rotating products such as wooden cases, pallet boxes, steel containers, cages and a range of manufactured products.

Cascade Corporation • PO Box 20187 • Portland, OR 97294-0187 • USA • 800 CASCADE (227.2233) • Tel 503.669.6257 • Fax 800.693.3768 • Fax 503.669.6367  
Cascade Canada Ltd. • 5570 Timberlea Blvd. • Guelph, Ontario L4W 4M6 • Canada • 800.380.2272 • Tel 905.629.7777 • Fax 905.629.7785